

MAXITA



MAXITA SEASON 2026

Where Families

MSY Maxita is a new luxury yacht that set sail in 2024. She features a master, a VIP, and four double/twin ensuite cabins. The modern, bright, and airy decor throughout the yacht gives you a feeling of a luxury high-end hotel. She can accommodate up to 12 guests and 8 dedicated crew members. There are plenty of water activities available with her large selection of exciting water toys.

Relax and Reconnect



**Unwind
& Delight**



DESTINATION

Croatia

43.8707° N

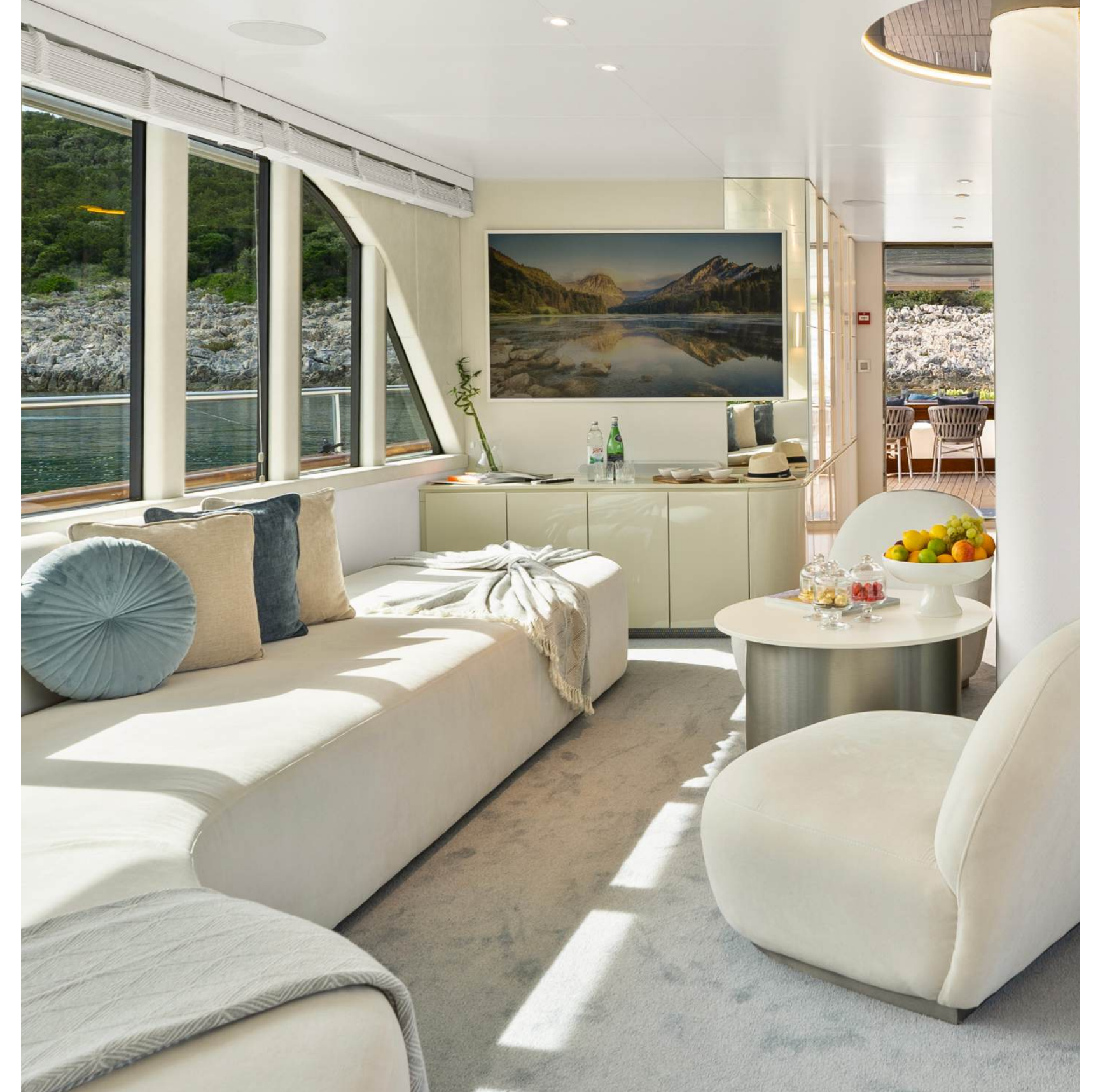
15.2324° E

Croatia is one of the most popular yachting destinations with many beautiful regions, historic towns, islands, and small villages.

Elegant Indoor Oasis

The elegant, modern, and bright features in the salon create a relaxed environment, where the guests can recharge and enjoy each other's company.

Dining at the large dining table, lounging on the white oval sofa, and enjoying a beverage at the fully stocked bar are just some of the options available inside.





Timeless & Bright

Ultimate Outdoor Experience

A smartly designed spacious sundeck has an open-air cinema, a BBQ, another bar, a jacuzzi, and several lounging areas.

The second dining table on main deck aft is great for savoring the delicious meals while enjoying the breathtaking scenery.





Balance & Bliss

Thrilling Water Adventures

For the adventurous guests, there are several fun water toys to choose from.

There's no better way to explore the Adriatic Sea than to ride a jet ski, e-foil, a seabob, waterskis, a wakeboard, or go on a Ringo ride.

There's also a waterslide, and four paddleboards for exploring the nearby hidden beaches.

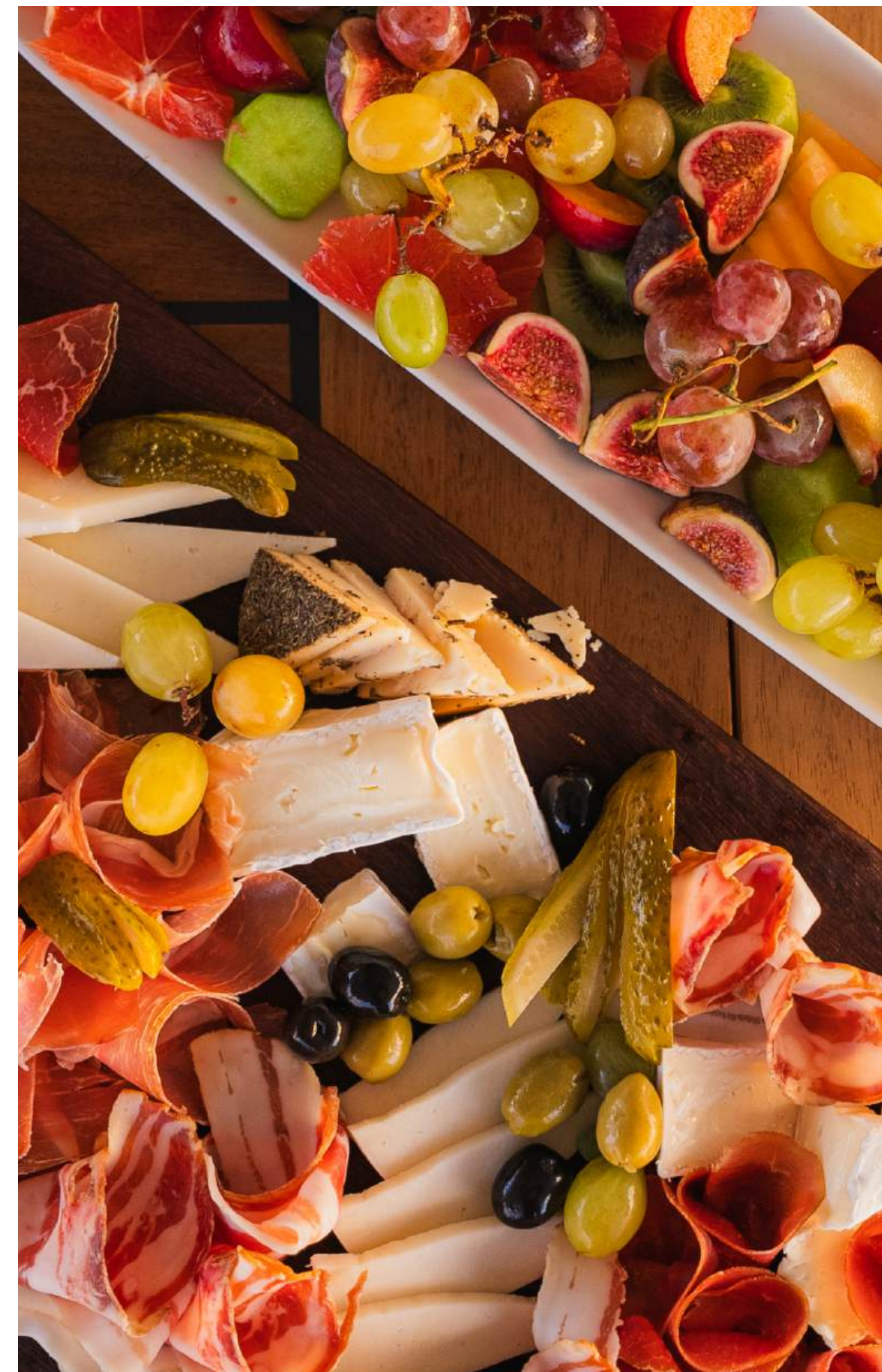




Majestic & Free

Mediterranean Gastronomic Delights

Aboard MSY Maxita the guests have the opportunity to taste the best of the Mediterranean cuisine. A delectable blend of regional flavours, featuring the freshest seafood, locally-sourced produce, cured meats, and robust cheeses. The essence of olive oil and native herbs infuse each dish, creating an aromatic feast. With a backdrop of stunning Mediterranean waters, the experience is not just a meal, but a culinary journey through the heart of the region.





All Fresco Dining

Serene Luxury Ambiance

Maxita features six well-appointed ensuite cabins, each equipped with Samsung 55" Frame Smart TVs and dedicated Samsung soundbars.

Four comfortable Double cabins can be converted into Twin cabins as needed.

With serene earthy tones and premium materials, Maxita provides an exceptional sanctuary for guests to retreat, refresh, and unwind



Specifications

Length

39.15 m
(128' 5")

Beam

8.2 m
(26' 10")

Draft

2.3 m
(7' 6")

Cruise speed

8.5 knots

Cabins / Guests

6 12

Built / Renovated

2024

Water Sports

Jet ski, 2 SeaBobs, E-foil, Water skiing, Ringo ride, Wakeboard, 3 Paddleboards, Floating Swimming Platforms, Waterslide

Crew Description

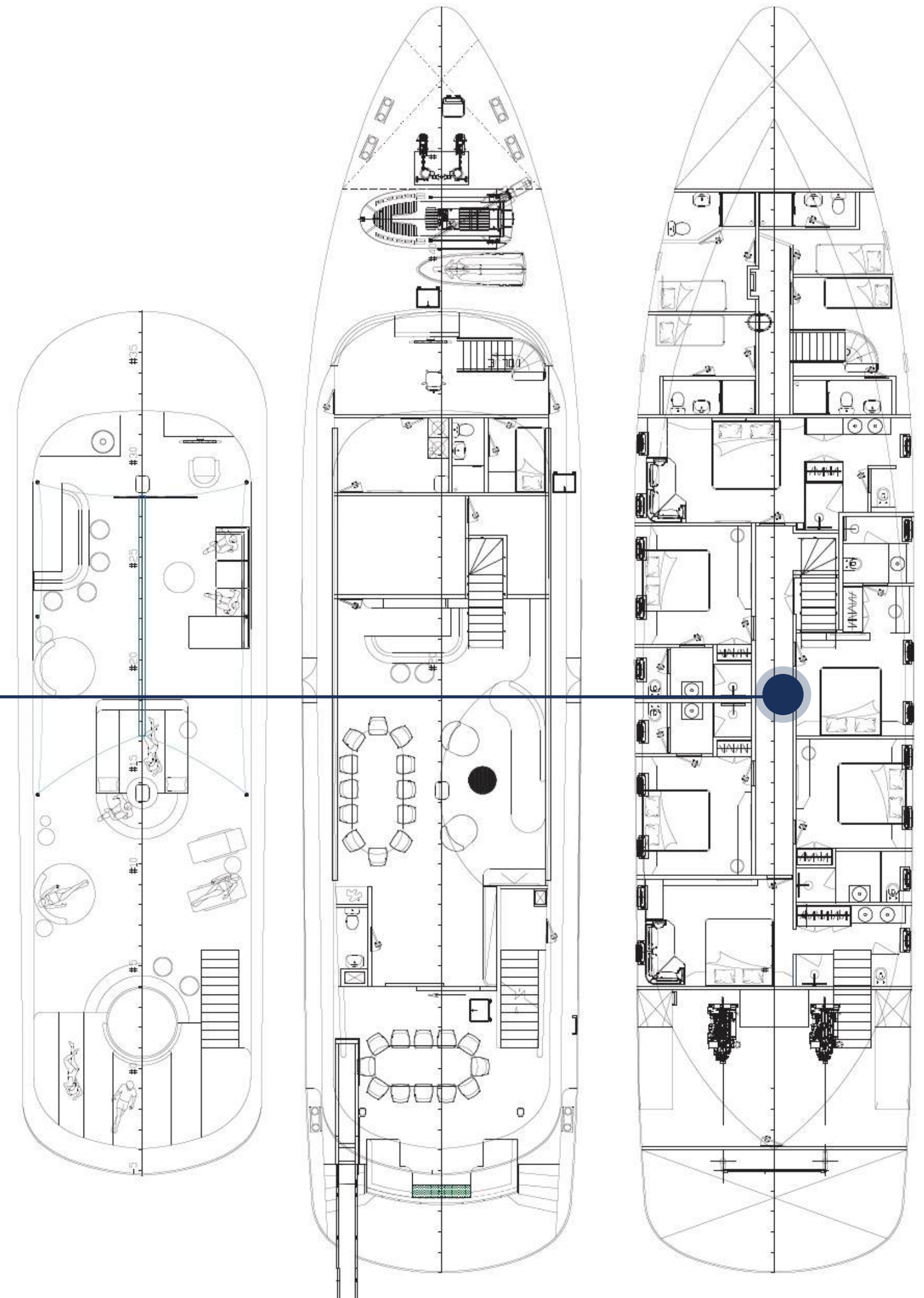
8 crew members
(Captain, Chef, 3 Hostesses, 3 Deckhands)



Cabin Description

LOWER DECK

- Master cabin with double bed and sofa. Private bathroom with shower box and home type toilet.
- VIP cabin with double bed and sofa. Private bathroom with shower box and home type toilet.
- 4 twin cabins (convertible to double). Private bathroom with shower box and home type toilet.



Cabin Details



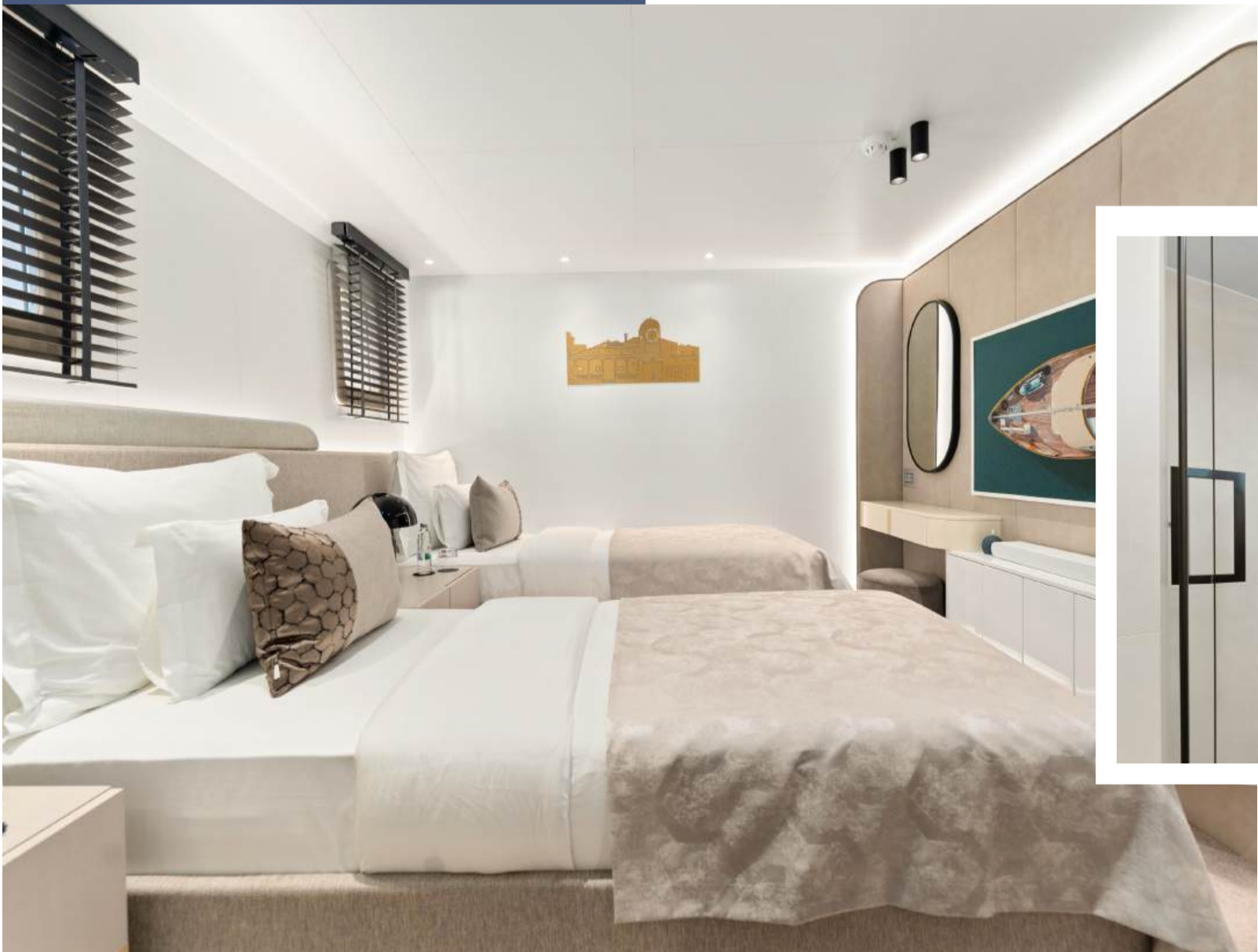
MASTER CABIN



VIP CABIN



CONVERTIBLE CABIN





[Click for video](#)



PRICES PER WEEK

SEASON A

From 18 April 2026
till 27 May 2026

€75,000

+ VAT + A.P.A

SEASON B

From 28 May 2026
till 20 June 2026

€78,000

+ VAT + A.P.A

SEASON C

From 21 June 2026
till 31 August 2026

€85,000

+ VAT + A.P.A

SEASON D

From 01 September 2026
till 02 October 2026

€78,000

+ VAT + A.P.A

SEASON E

From 03 October 2026
till 03 November 2026

€75,000

+ VAT + A.P.A

INCLUDED

Agency Support: guidance through the booking procedure, paperwork, preparation for the cruise, food, drinks, and route organization, during the cruise support, assistance in case of emergency. Entire support before and during the cruise.

Shipboard accommodation: maximum number of 12 guests sleeping in 6 cabins.

Fuel for cruising: 4 hours/day

Crew: 8 crew members (Captain, Chef, 3 Hostesses, 3 Deckhands)

Air conditioning: 24 hours/day.

Linen: bed sheets, bathroom, and beach towels

Wi-Fi: unlimited

EXTRA PAYMENTS

Mandatory extras

A.P.A. (Advance Provisioning Allowance)

30% of the charter price: To cover the following costs, but not limited to: fuel for tender and water sports equipment; additional fuel for cruising (above 4 h per day), food and beverages for the Charter Party; berthing dues and other harbor charges including pilots' fees, local taxes, divers' fees, customs formalities, charges for waste disposal, charges for water and electricity taken from shore; shipping agents' fees where applicable; Charter Party personal laundry; hire or purchase costs of any special equipment placed on board at the Charterer's request, shoreside transport and excursions, national park entrances and other costs for services requested by Charter Party during the charter and all other costs not specified as included. A.P.A is paid by the Client in addition to the charter fee for all relevant costs for the vessel that are not included in the charter fee. If A.P.A does not cover complete costs, the Client will pay exceeding the amount on board in cash. If costs made on charter are less than the amount is given as A.P.A, the amount that was not spent will be returned to the Client at the end of the voyage. A.P.A. does not include a tip for the crew.

VAT: 13% extra on top of the Charter Rate.

Non-Mandatory extras

TIPS: Tips are not included in the price of the charter and are a voluntary way of showing appreciation for a good service. Usually it is 10% to 15% of the charter price, according to your satisfaction, paid to the captain at the end of the charter and distributed equally by the captain to the rest of the crew.

Other options on request: Land transfers, fishing licenses, guided tours, excursions, restaurants, bike rentals, car rentals.

Delivery/Re-delivery Fee: Dubrovnik - 3,000 € fixed cost (in case of empty leg caused by (dis)embarkation outside home port)

Maxita

Disclaimer: This document is for informational purposes only and is not contractual. While we strive for accuracy, the publisher makes no warranties regarding the completeness or usefulness of the information and images provided. Yacht inventory, specifications, prices, etc., may change without notice. Reproduction of any text or images from this document requires written consent from the publisher.