

INSIEME
PRINCESS 85 FLY

Insieme features large spaces, both outdoor and indoor, allowing you to enjoy the sun, al-fresco dining, and comfortable interiors



INSIEME - PRINCESS 85 FLY

INFORMATION

LOA
25.99 m (85' 3")

BEAM
6.25 m (20'06")

DRAFT
1.8 m (5' 11")

BUILDER
Princess

GUESTS
8

CREW
4

BUILT
2009

REFIT
2024

NAVAL ARCHITECT
Princess Yachts

HULL MATERIAL
GRP

SUPERSTRUCTURE
Flybridge

HULL CONFIGURATION
Planing hull



INSIEME - PRINCESS 85 FLY

KEY FEATURES



1

Fully stabilized at anchor and cruising

2

Jacuzzi at fly bridge

3

Rich selection of water toys

4

Three double bed cabins plus 1 with bunk beds

The Princess 85 Fly stands out as one of the most spacious and luxurious yachts in her class, built to the highest standards by the prestigious British shipyard, Princess Yachts, in 2009. Following a refit in 2024, she is in impeccable condition and fully prepared for charter in Croatia. With expansive interior and exterior spaces, this yacht offers the ultimate setting for enjoying the sun, al fresco dining, or unwinding in sophisticated comfort. The full-beam master suite is a true sanctuary, complemented by two elegant VIP cabins, each with double beds. The fourth cabin, featuring bunk beds, is perfect for additional guests. Her timeless, elegant decor is matched by a curated selection of water toys, making her the ideal choice for an unforgettable cruising experience.



INSIEME - PRINCESS 85 FLY

GALLERY



Al fresco dining table

INSIEME - PRINCESS 85 FLY

GALLERY



Sundeck

INSIEME - PRINCESS 85 FLY

GALLERY



Sundeck dining area

INSIEME - PRINCESS 85 FLY

GALLERY



Jacuzzi

INSIEME - PRINCESS 85 FLY

GALLERY



Sundeck area

INSIEME - PRINCESS 85 FLY

GALLERY



Salon

INSIEME - PRINCESS 85 FLY

GALLERY



Salon view

INSIEME - PRINCESS 85 FLY

GALLERY



Salon dining area

INSIEME - PRINCESS 85 FLY

GALLERY



salon side view

INSIEME - PRINCESS 85 FLY

GALLERY



Master cabin

INSIEME - PRINCESS 85 FLY

GALLERY



Master cabin side view

INSIEME - PRINCESS 85 FLY

GALLERY



Master cabin view

INSIEME - PRINCESS 85 FLY

GALLERY



VIP cabin

INSIEME - PRINCESS 85 FLY

GALLERY



VIP cabin view

INSIEME - PRINCESS 85 FLY

GALLERY



Double cabin

INSIEME - PRINCESS 85 FLY

GALLERY



Bunk bed cabin

INSIEME - PRINCESS 85 FLY

GALLERY



Bathroom

INSIEME - PRINCESS 85 FLY

TEHNIICAL SPECIFICATIONS

LOA

25.99 m (85' 3")

BEAM

6,25 m (20'06")

DRAFT

1.8 m (5' 11")

GUESTS

8

CABINS CABIN CONFIGURATION

4

3 Double Cabins,
1 Twin Cabin

BED CONFIGURATION

2 Bunk Beds,
2 King Beds, 1 Double Bed

ENGINES

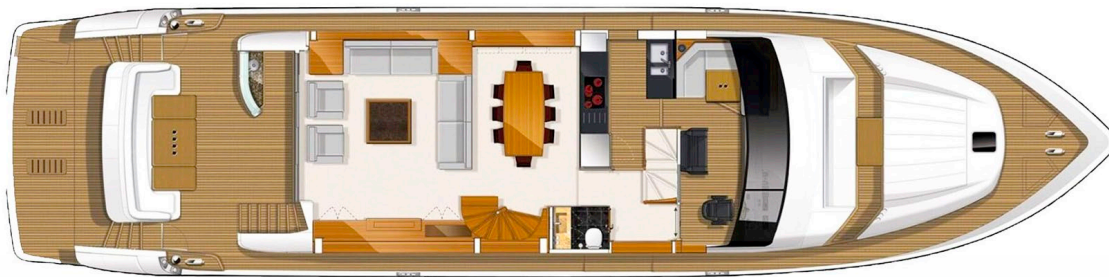
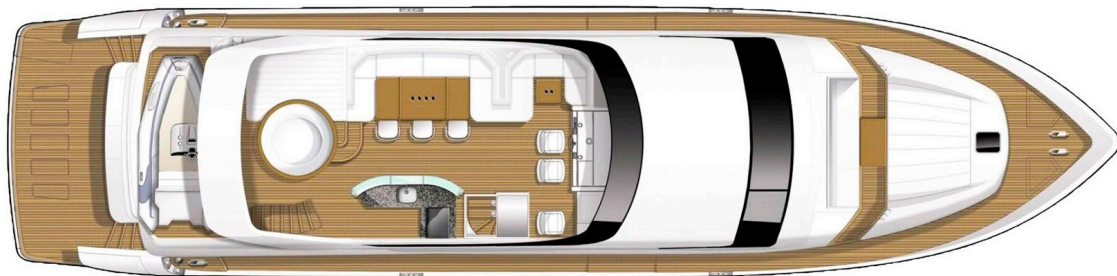
2x MTU 12V/2000 M93
(2x1825hp) 2 Onan
generators, each 27 Kw

CRUISING SPEED

19 knots

FUEL CONSUMPTION

400lbs/hour



INSIEME - PRINCESS 85 FLY

TENDER & SEA TOYS / EQUIPMENT

- > Rib Tender 640, 175 PS Outboard engine
seats up to 8 passengers+Captain
 - > Jet Ski 230 Wake Pro-2021 model
 - > SeaBob F5S x2
 - > Waterskis
 - > Wake board
 - > Doughnut
 - > SUP x2
 - > Snorkeling equipment
 - > Fishing equipment
-
- > Air conditioning
 - > Stabilisers at anchor
 - > Stabilisers underway
 - > Deck Jacuzzi
 - > WiFi connection



INSIEME
PRINCESS 85 FLY



We invite you to
discover fascinating
Croatia with us!