

CREW MEMBERS

M / Y R E N A T A



MISLAV LOZANČIĆ

CAPTAIN



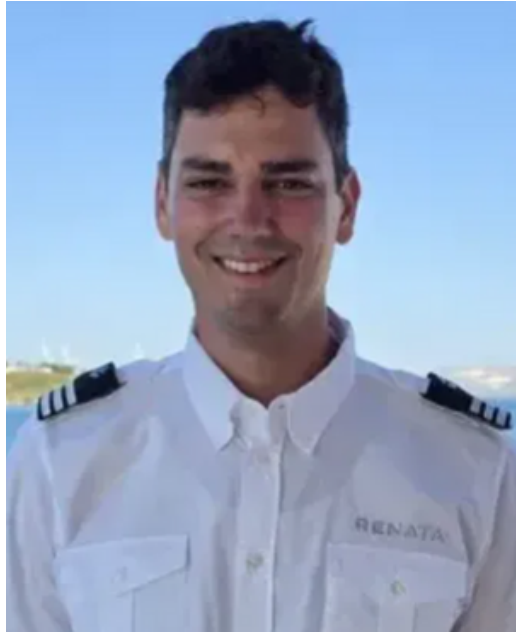
With more than 15 years at sea, Captain Mislav brings confidence, composure, and deep expertise to every journey on M/Y RENATA. His career has taken him across the Mediterranean, Adriatic, Aegean, and Marmara seas, commanding prestigious charter yachts and earning a reputation for precision and calm leadership.

Guests know him for his ability to design itineraries that balance adventure and tranquility, always tailored to individual wishes. Discreet, loyal, and dedicated to excellence, Mislav ensures every voyage runs seamlessly, creating a safe and indulgent atmosphere that leaves guests free to enjoy the very best of yachting.

M / Y R E N A T A

DUJE NAZOR

FIRST OFFICER



Duje's maritime story is one of passion and ambition, beginning with his studies at the Maritime Faculty in Split and taking him as far as Antarctica aboard the expedition ship Seaventure. His wide-ranging experience, from deckhand in the Caribbean to officer on European charter yachts, makes him adaptable and highly skilled in diverse conditions.

Duje thrives in multicultural environments, communicating with ease in English and Italian, and brings a proactive, attentive presence to every task. Whether managing navigation or assisting guests with on-water activities, his positive energy and professional integrity set the tone for a smooth charter experience.

KREŠIMIR MILIĆ

CHIEF ENGINEER



Krešimir is the heartbeat of RENATA's technical operations, ensuring every system works with flawless precision. A graduate in mechanical engineering, he has honed his expertise across global cruising grounds since 2016, specializing in electrical and electronic systems.

Known for his forward-thinking approach, he anticipates challenges before they arise, giving guests peace of mind that every comfort is safeguarded. Equally valued for his approachable and engaging personality, he bridges the technical with the human, creating a reassuring presence both in the engine room and among guests. His dedication guarantees that RENATA operates at peak performance throughout every voyage.

DUJE MILIĆ

CHEF

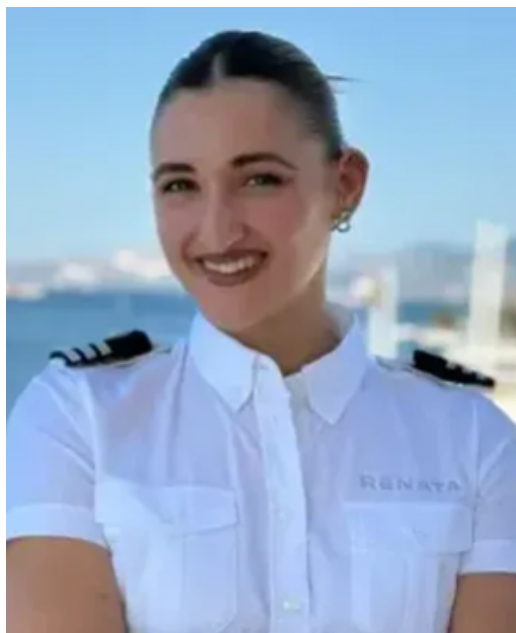


Chef Duje transforms dining on RENATA into a culinary journey. Having worked as Head Chef on acclaimed private and charter yachts, he has mastered Mediterranean and international cuisines, with a particular flair for French, Italian, Croatian, Greek, and Mexican influences. His menus balance creativity with wellness, offering dishes that are both indulgent and health-conscious.

Winner of multiple gold medals in international competitions, he thrives on creating experiences that surprise and delight - from chic, al fresco lunches to formal multi-course dinners. Passionate about the sea, Duje often draws inspiration from fresh local ingredients, giving guests a truly authentic taste of the destinations they explore.

DOMINIKA COTIĆ

CHIEF STEWARDESS



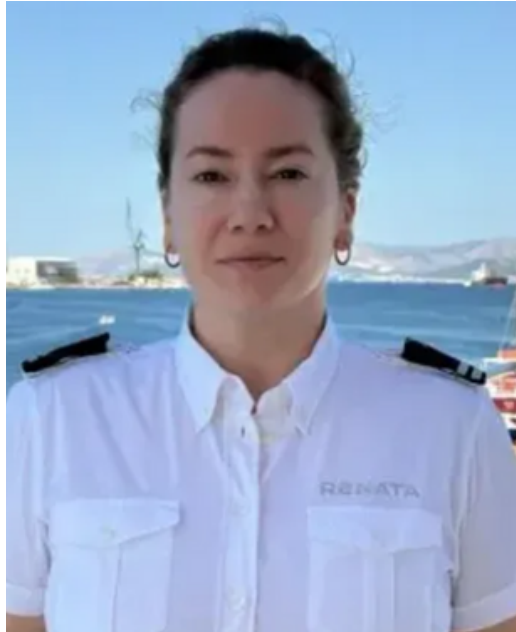
Elegant and detail-driven, Dominika ensures RENATA's interior runs with flawless precision and warmth. Her background in finance, combined with years in luxury hospitality, gives her an exceptional ability to anticipate needs and manage complex service with effortless grace. As Chief Stewardess, she leads her team with composure and inspires a standard of service that consistently exceeds expectations.

Guests appreciate her calm presence, polished manners, and ability to create a welcoming atmosphere where every detail feels curated just for them. Under her guidance, the interior becomes a sanctuary of comfort and refined luxury.

M / Y R E N A T A

MAJA DELIĆ

STEWARDESS



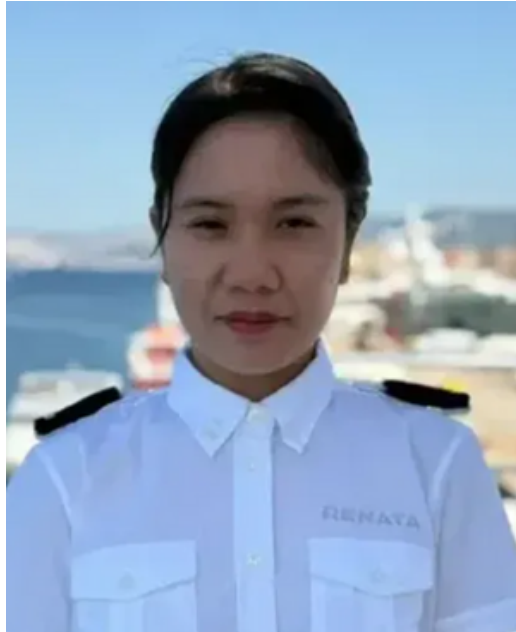
Maja's decade-long career in luxury yachting has taken her across the Mediterranean, where she has mastered the art of delivering polished, personalized service. Having advanced from Second Stewardess to leadership roles, she is skilled in fine dining, housekeeping, and guest relations.

Her strength lies in anticipating unspoken needs and ensuring every guest feels uniquely cared for. Maja's dedication and professionalism make her a trusted presence on board, and her natural warmth creates a feeling of home, even while at sea.

M / Y R E N A T A

DONA ROSE MAPANAO

STEWARDESS



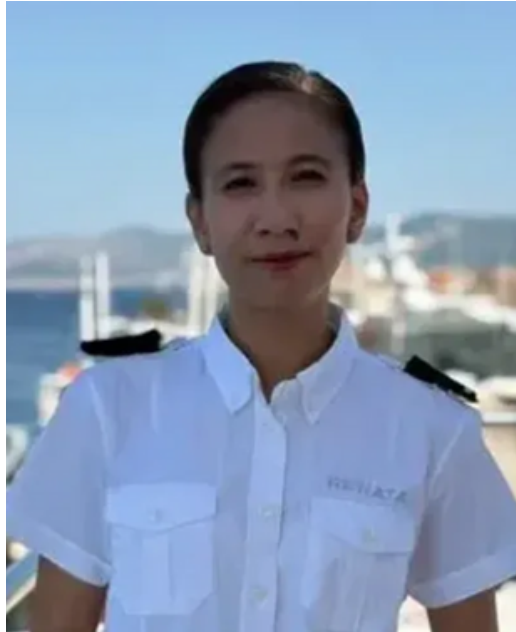
With a strong foundation in hospitality and an instinct for guest care, Dona Rose brings both professionalism and heart to RENATA's interior team. Calm, attentive, and polished, she ensures the onboard atmosphere is both welcoming and refined.

Guests are drawn to her positive energy and thoughtful service, which elevate even the smallest details into moments of care. Her presence helps set the tone for a relaxed and enjoyable charter experience.

M / Y R E N A T A

RUDYLYN ARRANZ

STEWARDESS



Rudylyn combines quiet efficiency with remarkable organizational skills, making her an indispensable part of RENATA's service team. She excels in maintaining smooth operations behind the scenes while ensuring service is seamless and discreet.

Her composed manner and keen eye for detail are especially valued during high-pressure moments, guaranteeing guests always experience effortless comfort. Professional and thoughtful, Rudylyn adds a sense of balance and reliability to the interior.

M / Y R E N A T A

IVAN ERCEGOVAC

DECKHAND



Ivan brings more than eight years of deck experience to RENATA, having worked on both private and charter yachts ranging from 40 to 110 meters. With a technical background in marine engineering, he combines practical expertise with a keen eye for detail in maintaining the yacht's exterior.

Guests know him as approachable and dependable, whether assisting with water sports, tender operations, or daily deck routines. His calm demeanor and professional precision ensure safety and enjoyment are always at the forefront of every activity on board.

M / Y R E N A T A

JOMAR PASCUAL

DECKHAND



Jomar enriches the deck team with his dual experience as a deckhand and second engineer. His hands-on technical knowledge, paired with a strong work ethic, makes him a versatile and reliable crew member.

Guests benefit from his proactive support in water activities, tender handling, and day-to-day exterior care, all delivered with enthusiasm and professionalism. Dedicated to continuous learning, Jomar ensures RENATA's operations are smooth and efficient, creating an atmosphere of trust and ease for everyone on board.
