



ALYSS

AZIMUT 72 FLY




ALYSS ~ AZIMUT 72 FLY



2

Loa **23.04 m** Beam **5.60 m** Draft **1.82 m** Built **2018** Shipyard **Azimut**  
Guests **8** Cabins **4** Crew **2** Cruising speed **26 knots** Max speed **32 knots**





ALYSS ~ AZIMUT 72 FLY

## KEY FEATURES

1

**4 cabins with  
ensuite bathrooms**

2

**Seakeeper  
stabilizer**

3

**Hard top with  
integrated soft top**

4

**Captivating  
Italian line**

3



## OVERVIEW

This Azimut 72 Fly beauty, Alyss, has been designed and engineered according to the highest standards and she amazes with her proportions: sleek exteriors, spaces perfectly harmonized with spacious interiors. This extraordinary Azimut model set new standards in volume both on the exterior and inside, which is never more visible than in the large, main deck saloon, surrounded by huge windows. Alyss is a comfortably sized yacht; she has three guest cabins and a large master cabin with a large centrally placed bed and a small private seating next to a hull window. Three of the cabins are double and one is twin, but all of them are equal in style, lit by cozy LED lights and following the same dark-and-light color scheme. The largest flybridge in A category allows guests and owner to travel comfortably in natural shadow, while the spacious cockpit can accommodate up to 8 people. The yacht is also equipped with a swimming platform. Jam-packed with innovative solutions, Alyss is a yacht bound to be a great choice for charter holiday.



ALYSS ~ AZIMUT 72 FLY



5

*Exterior*



ALYSS ~ AZIMUT 72 FLY



*Exterior*



ALYSS ~ AZIMUT 72 FLY



*Exterior*



ALYSS ~ AZIMUT 72 FLY



8

*Exterior*



ALYSS ~ AZIMUT 72 FLY



Exterior



ALYSS ~ AZIMUT 72 FLY





ALYSS ~ AZIMUT 72 FLY



*Salon*



ALYSS ~ AZIMUT 72 FLY



Salon



ALYSS ~ AZIMUT 72 FLY



Salon



ALYSS ~ AZIMUT 72 FLY



14

*Dining area*



ALYSS ~ AZIMUT 72 FLY

15

*Dining area*



ALYSS ~ AZIMUT 72 FLY



16

Kitchen



ALYSS ~ AZIMUT 72 FLY



17

*Master cabin*



ALYSS ~ AZIMUT 72 FLY



*Master cabin*



ALYSS ~ AZIMUT 72 FLY



*Master cabin bathroom*



ALYSS ~ AZIMUT 72 FLY



*Vip cabin*



ALYSS ~ AZIMUT 72 FLY



*Port side guest cabin*



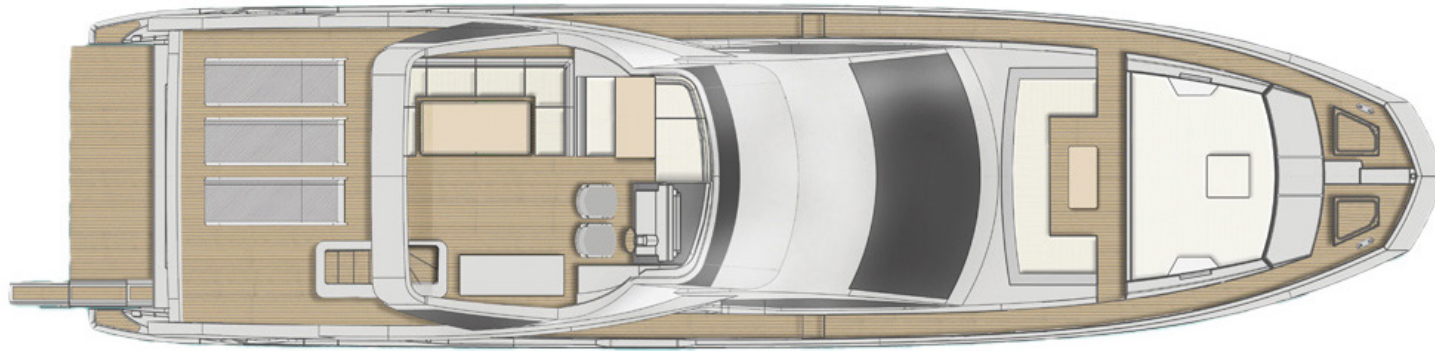
ALYSS ~ AZIMUT 72 FLY



22

*Starboard side guest cabin*



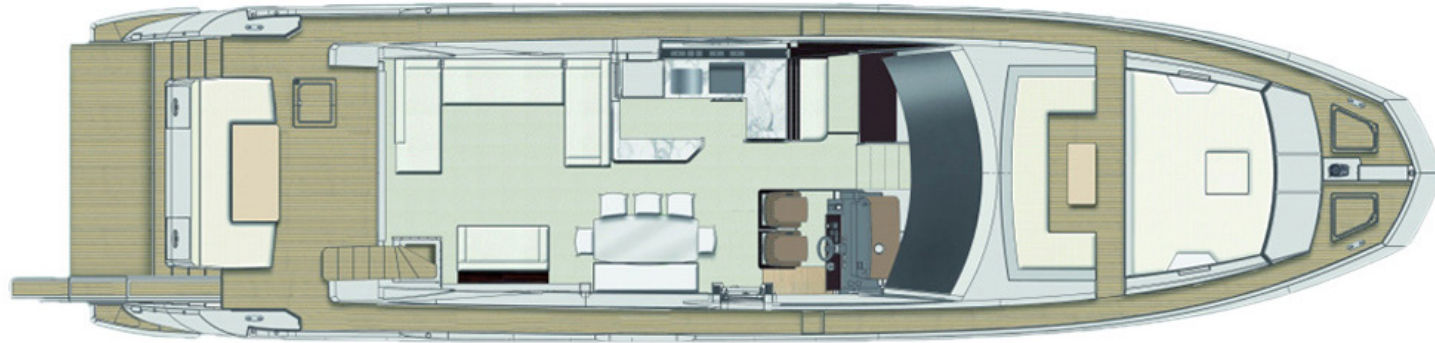






*Layout lower deck*







## TECHNICAL SPECIFICATIONS

**Length:** 23,04 m

**Beam:** 5,60 m

**Draft:** : 1,82 m

**Built:** 2018

**Flag:** Croatian

**Hull designer:** P.L. AUSONIO Naval Architecture & Azimut  
R&D Dept.

**Naval Architect:** Stefano Righini & Carlo Galeazzi

**Hull Construction:** GRP + carbon fibre

**Engines:** 2 x MAN V12 1400 HP

**Generators:** 2 x Generator Onan 19 KW

**Cruising Speed:** 26 knots

**Number of guests:** 8

**Number of cabins:** 4

**Cabin configuration:** 3 double, 1 twin

**Bed configuration:** 3 double, 2 single

### ENTERTAINMENT

Internet TV

sound systems in salon

cockpit and on flybridge

free Wi-Fi Internet

### EQUIPMENT

Cockpit table can be lowered into a sun lounger

Big sunbed and bimini on bow

Hydraulic bathing platform

Huge flybridge with spacious seating and sunbed area

Electrical hard-soft top

BBQ on the flybridge



ALYSS ~ AZIMUT 72 FLY

## TENDER & SEA TOYS

• Tender Pirelli J33 on the bathing platform • SeaDoo Jetski on flybridge • Seabob





ALYSS ~ AZIMUT 72 FLY



*We invite you to discover fascinating Croatia with us!*