



2 DRUNK

MOTOR YACHT

2 DRUNK ~ MOTOR YACHT



Loa **21.07 m** Beam **5.1 m** Draft **1.53 m** Built **2012** Builder **Sunseeker**

Total Guests (Sleeping) **8** Total Guests (Cruising) **12** Cabins **4 +crew** Crew **2** Cruising speed **20 knots**

2 DRUNK ~ MOTOR YACHT



KEY FEATURES

1

**Eight guests
in four cabins**

2

**Attractive
design**

3

**Family
friendly yacht**

4

**Great value
for money**

OVERVIEW

Welcome onboard of motor yacht Sunseeker Manhattan 63, a stunning beauty, designed to provide a true benchmark and pure enjoyment. Fully air-conditioned with a cruising speed of 20 knots, this Sunseeker yacht represents the perfect charter yacht for up to 8 people, family, or friends. '2 Drunk' is a model of understated elegance, every inch has been painstakingly crafted with flawless attention to detail, offering an exceptional layout. She boasts a flybridge that offers opportunity to relax and unwind but with the added benefit of feeling the warmth of the sun on your skin. The aft area of 2 Drunk is perfect for al fresco dining and lounging. On top of all, the salon is a welcoming modern space with a separate dining and seating area – perfect for entertaining friends and loved ones. This 21-meter long Sunseeker yacht offers accommodation for 8 guests in four cabins. She features the full-beam Master cabin, the VIP cabin with en-suite bathrooms and two twin cabins with single beds. The luxury yacht is also capable of carrying up to 2 crew onboard to ensure a memorable cruising experience. '2Drunk' definitely offers an unforgettable experience for those seeking a relaxing escape or adventure-filled charter journey.

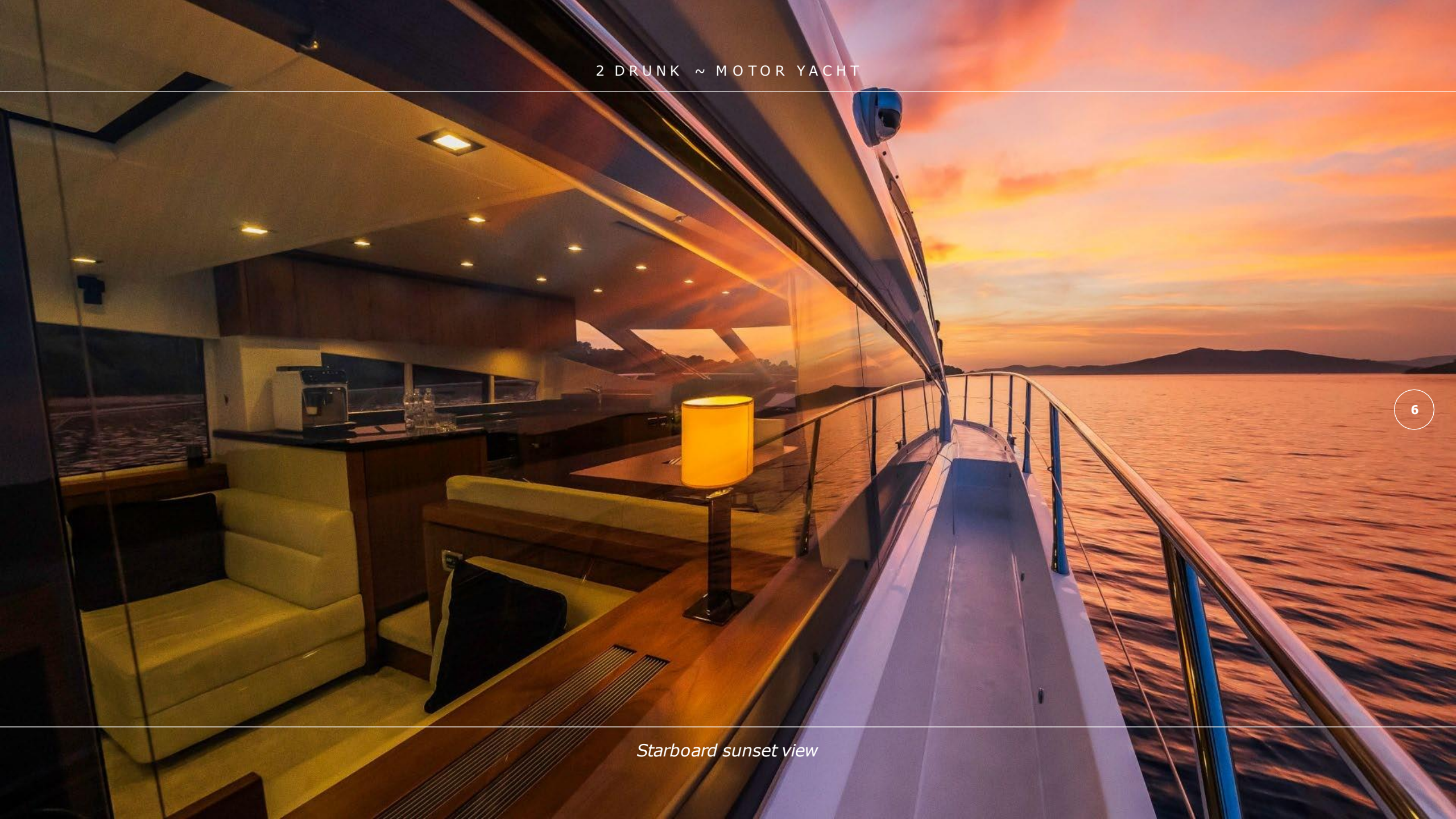
2-DRUNK ~ MOTOR YACHT



5

Flybridge with helm station and grill

2 DRUNK ~ MOTOR YACHT



6

Starboard sunset view



Aft dining area



Salon entrance



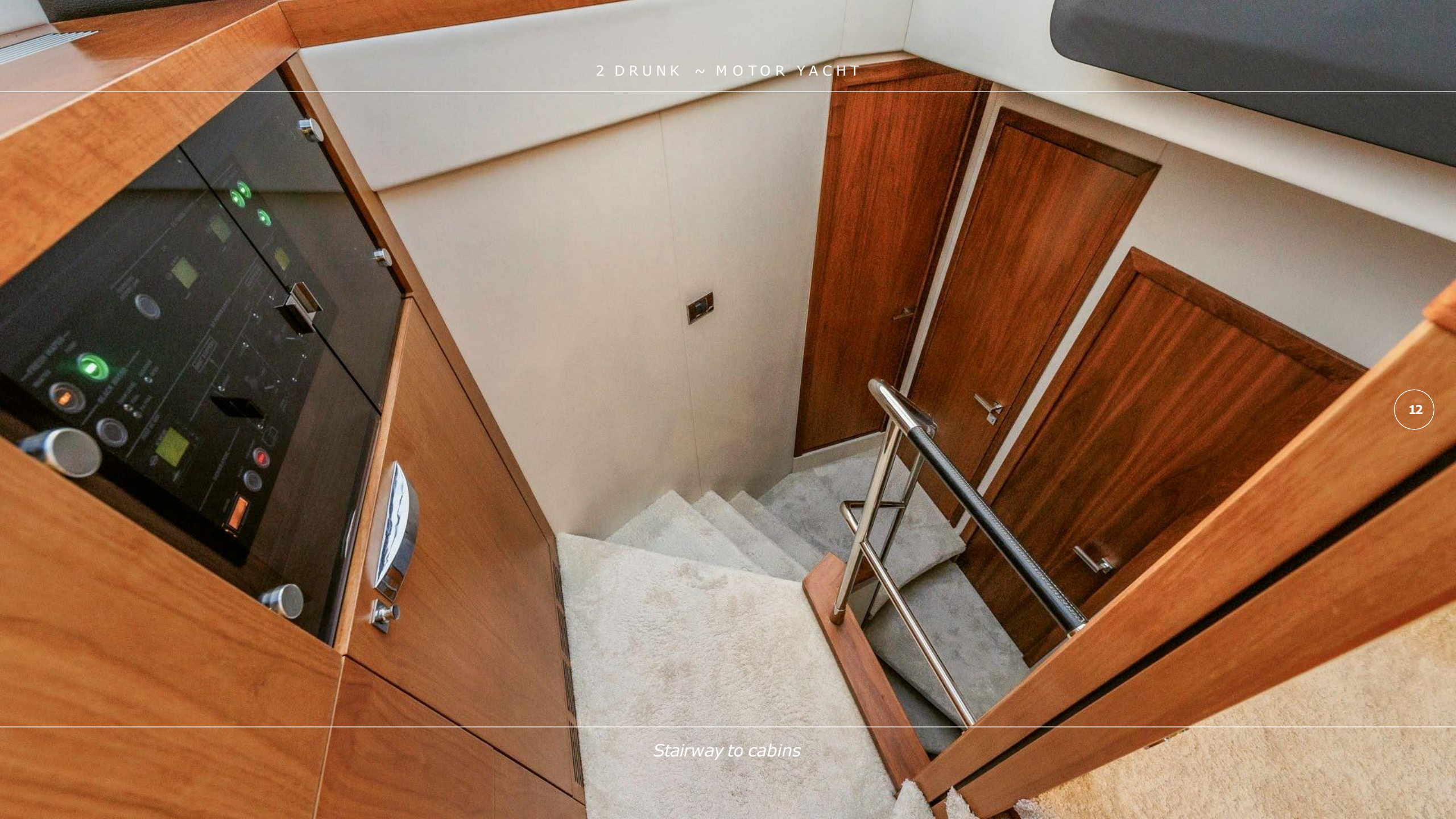
Salon dining table detail



Salon with galley



Wheelhouse



Stairway to cabins



Master cabin



Master cabin bathroom



VIP cabin



VIP cabin bathroom

2 DRUNK ~ MOTOR YACHT

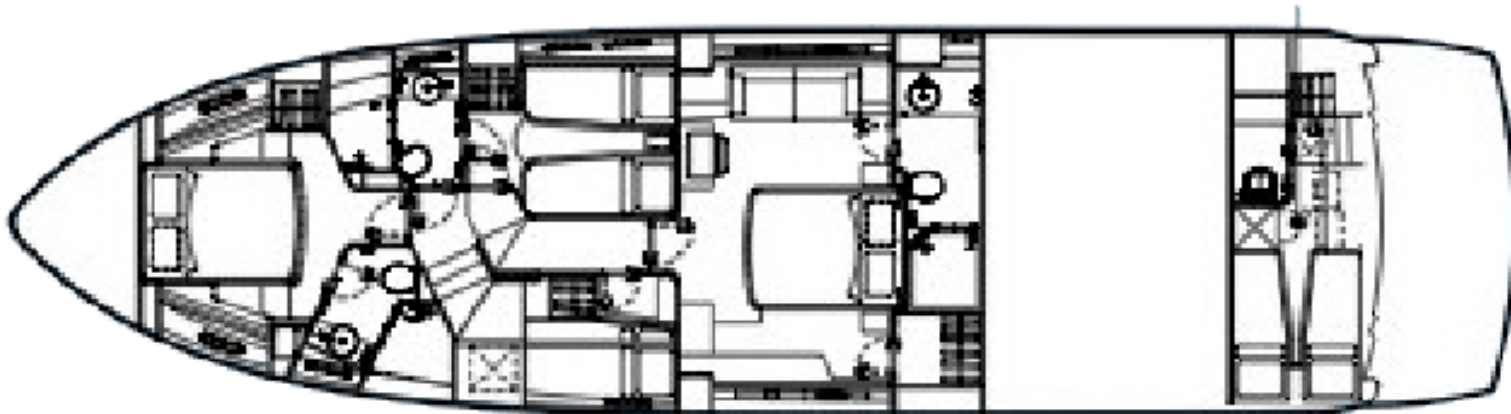
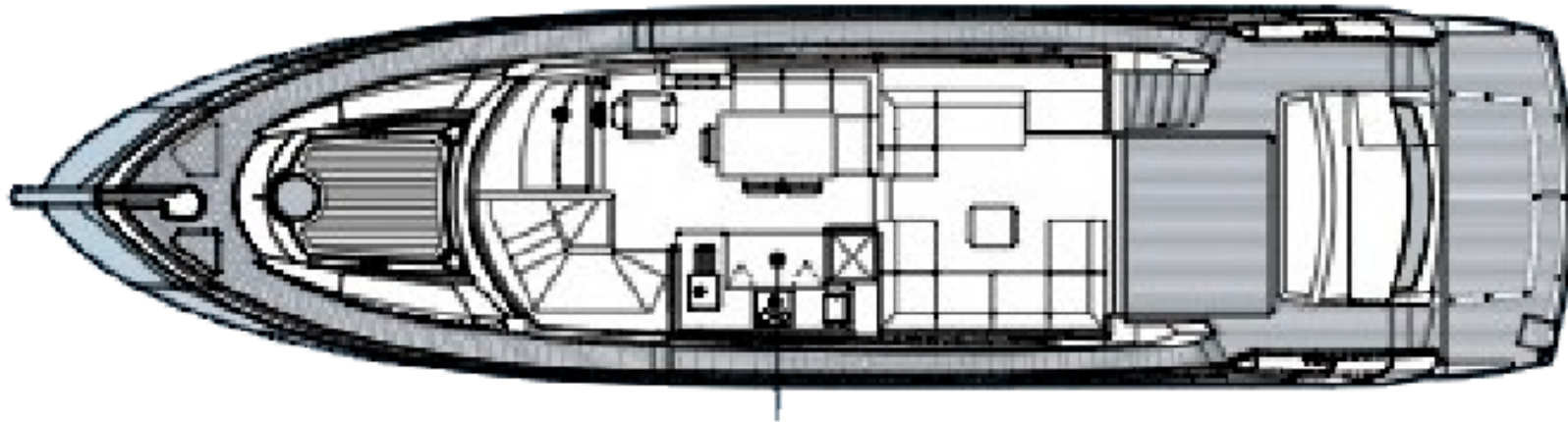
17

Star board Twin cabin



Twin cabin with bunk beds

2 DRUNK ~ MOTOR YACHT



Layout

TECHNICAL SPECIFICATIONS

Length: 21.07 m

Beam: 5.1m

Draft: 1,53 m

Built: 2012

Flag: Polish

Engines: 2 x MAN 1200 HP

Cruising speed: 20 knots

Fuel consumption: 220 Litres/Hr

Number of guests: 8

Number of cabins: 4

Number of crew: 2

Cabin configuration: 2 Double, 2 Twin

2 DRUNK ~ MOTOR YACHT

TENDER & SEA TOYS

Williams Jet tender 325 • 1xSUP • 1xDonut • *Sea bob

**on request*



2 DRUNK ~ MOTOR YACHT

We invite you to discover fascinating Croatia with us!