



OMNIA

Length: 46.00 metres (150' 11")

Beam: 9.20 metres (30' 2")

Draft: 3.0 metres (9' 10")

Number of Guests: 12

Number of Crew: 10

Built: 2017

Refit: 2023

Naval Architect: Ultramarine, Rijeka & Simtec-Marine

Hull Construction: Steel

Hull Configuration: Displacement

Air conditioning, Deck Jacuzzi, Gym/exercise equipment, WiFi connection on board

OMNIA was built in 2017 and upgraded in 2022. She boasts premium amenities across her two deck levels including al fresco dining, deck jacuzzi and a sauna. With accommodation for up to 12 guests, and convertible cabins to allow for 6 doubles, she is the ideal yacht for couples or families.

EXTERIOR

The exceptional deck spaces are across two levels offering fabulous sociable areas to suite any occasion. The main deck aft can host wonderful al fresco dinners around the 12-seater table which is shaded by the sun deck overhang. From the deck there is access directly to the main salon, steps up to the upper

sun deck and down to the lower swim platform from where the crew will launch the water toys. The upper sun deck boasts a jacuzzi, the perfect place to relax after a day on the water or an invigorating sauna which is available on the port side of the main deck. For sun worshippers the upper deck is fitted with two wide sun pads and a comfortable lounge and wet bar, which can be covered with a shade if required.

INTERIOR

Her interior décor is stylish and contemporary blending light wood with a neutral colour palette, creating a warm and welcoming environment. The main salon is cleverly zoned, creating larger social spaces and cosier areas where guests can take a quiet moment. Entering through the sliding glass doors from the aft deck, guests are greeted by a generous lounge, with opposing sofas and wet bar. A bar and dining table are situated amidships, zoned to offer a formal dining setting for up to 12 guests.

A more casual lounge is forward in the main salon, separated by the bar and subtle room divider where a U shaped sofa creates a cosy TV nook, while to starboard is a games table.

Panoramic windows surround the main deck, ensuring great natural light and endless views.

CLIENT FEEDBACK

Key Features

- 1** Huge sun deck with jacuzzi
- 2** Convertible cabins for 6 doubles
- 3** Exciting collection of water toys
- 4** Outstanding local crew



OMNIA



OMNIA



aft



deck lounge area



al fresco dining



Jacuzzi



Sunpads



deck lounging area



dining area



main saloon



TV lounge



master suite



master suite



master ensuite



VIP suite



Guest suite



Guest suite



Guest suite



Guest suite



Guest en suite



Guest en suite

SPECIFICATIONS

ACCOMMODATION

Number of guests: 12

Number of cabins: 6

Cabin configuration: 4 Double Cabins, 2 Twin Cabins, 2 Convertible Cabins

Bed configuration: 2 King Beds, 2 Queen Beds, 4 Single Beds

EQUIPMENT

Engines: 2 x 86kw Caterpillar Sail Area: 600m² / 6500 sq ft

Cruising Speed: 10 knots

Fuel Consumption: 100 Litres/Hr

WATERSPORTS

Tender + Toys: 8m BRIG Eagle tender with 300hp outboard (new in 2024) - Seats 16

5 m BRIG tender with 70hp outboard motor

2 x Seadoo Spark Trixx Jetskis 90hp (2 person)

2 x F5 Seabobs

2 x Stand up paddle boards

2 x Inflatable kayaks (2 person)

1 x Wakeboard, adult

1 x Water skis, adult

1 x Water skis, children

1 x Towable Jobe tube (1 person)

1 x Towable Soinera tube (3 person)

12 x Snorkelling equipment, (8 adult, 4 children)

Water shoes (all sizes)

Fishing equipment (2 spin fishing rods, jigs for fish, octopus, squids, etc.)

NEW FOR 2024

Tiron Jetboard

Slide

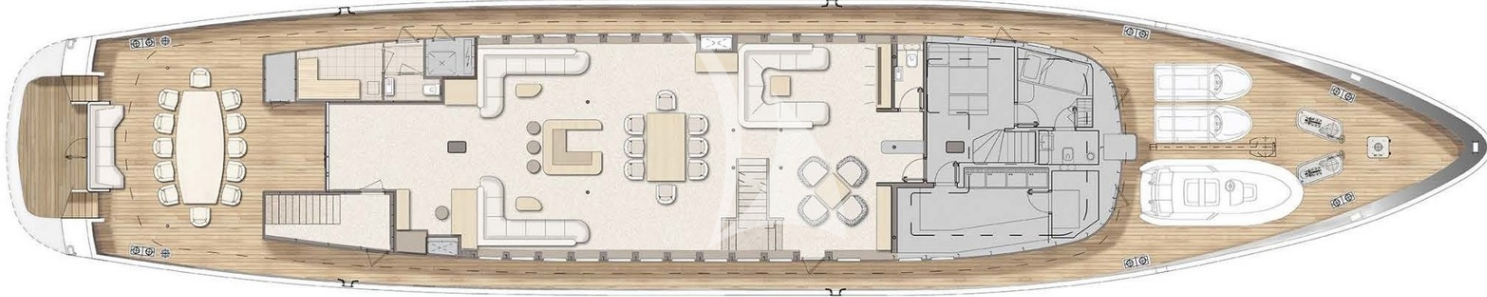
Seaside waterpark

LAYOUT

UPPER DECK



MAIN DECK



LOWER DECK



Disclaimer

This document is not contractual. All specifications are given in good faith and offered for informational purposes only. The publisher and company do not warrant or assume any legal liability or responsibility for the accuracy, completeness, or usefulness of any information and/or images displayed. Yacht inventory, specifications and charter prices are subject to change without prior notice. None of the text and/or images used in this brochure may be reproduced without written consent from the publisher.